

NEWSLETTER

Up to date ...

THE MOST ADVANCED EQUIPMENT:

We are proud to introduce the most up to date Obstetric and Gynaecology ultrasound system in Adelaide.

The Voluson™ E10 is the latest in the Expert Series and is designed particularly for specialised women's ultrasound practices such as Adelaide Women's Imaging.

Advantages are:

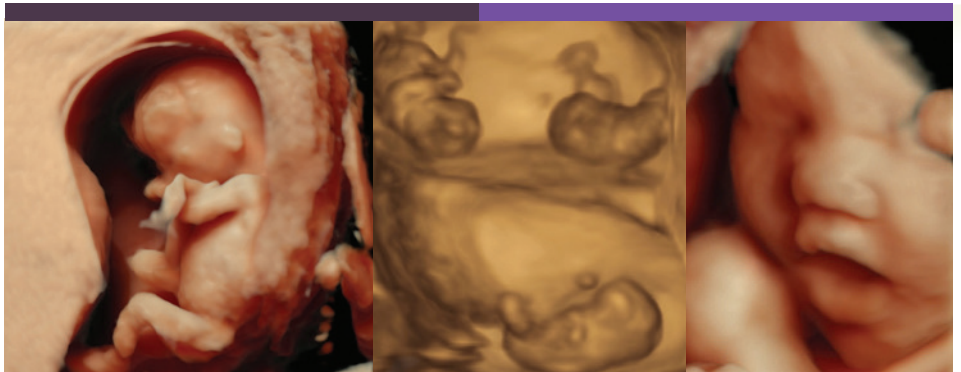
2D imaging for more clarity, speed and flexibility in O&G imaging.

The highest level of 4D imaging opportunities including HDlive™, V-SRI all of which allow new ways to image and interpret complex obstetric and gynaecology findings.

First commercially available curved matrix electronic 4D probe designed for O&G with STIC technology for complex fetal cardiac cases and fetal vascular abnormalities.

Voluson E10 imaging offers new tools to help improve visualisation and identification of pathology in routine gynecology and Assisted Reproductive Medicine.

For Tertiary O&G Sonologists like ourselves, we are very excited about how these new technologies can assist you and your patients. We know your patients will be pleased as well.



Images L to R - 12 week fetus; 10 week triplets; 36 week fetal face

Welcome to Adelaide Women's Imaging

HAPPY NEW YEAR TO YOU ALL

Happy New Year and welcome to the Adelaide Women's Imaging (AWI) Newsletter. We hope that this information will in some way benefit you in the care of your patients.

Adelaide Women's Imaging grew considerably in 2015. We have had several new and exciting developments. We have 4 new ultrasound machines, our GE Voluson E10's are the pinnacle of ultrasound in women's health. We now offer a 5 day service with Dr Anneliese Perkins joining the team on Mondays and Wednesdays, Dr Jay McGavigan continues with us on Tuesdays and Thursdays while Dr Peter Muller is back with us on Fridays after a break in the US.

We now have more flexibility in our booking times and look forward to serving your patients in the best way we can.

We offer 4D scans on Mondays and with the recent installation of projector screens in all of our rooms, your patients feel involved in their imaging with us and enjoy spectacular quality images of their baby.

We continue to offer Harmony™ (NIPT) Monday to Friday. We are also increasing our gynaecological services to include HyCoSy, Sonohysterograms and ultrasound guided Mirena insertion (*see over for details on these services*).

For the most up to date information on latest news and our services, please refer your patients to our website: www.adelaidewomensimaging.com.au

INFORMATION/EDUCATIONAL EVENTS

THURSDAY 10TH MARCH 2016

We are having an information night to discuss a practical approach to Non Invasive Prenatal Testing (NIPT) followed by a tour of our new advanced technology.

SATURDAY 19TH MARCH 2016

We are sponsoring a SA ASUM Workshop on Advanced Gynaecology Ultrasound with particular interest in endometriosis. This will consist of lectures, live scanning and separate hands on educational opportunities.

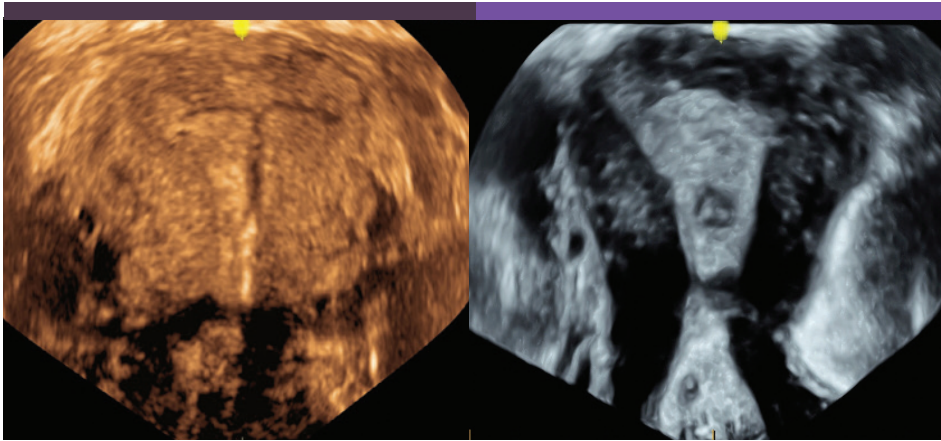
Invitations to follow soon.

For further information contact our Medical Liaison Officer, Amy Sancilio on 0400 636 272 or visit our website.

ALSO FEATURED IN THIS ISSUE...



- 1 Welcome Dr Anneliese Perkins
- 2 New Gynaecology Ultrasound Services



Images L to R - 3D Coronal of Mirena within endometrial cavity; 3D Coronal of endometrial polyp.

New Gynaecology Ultrasound Services

With our state-of-the-art new ultrasound equipment we are excited to be able to offer more imaging options for women, including:

- Saline infusion sonohysterography
- Hysterosalpingo-contrast-sonography (HyCoSy)
- Ultrasonic assessment for Deep Infiltrating Endometriosis
- Ultrasound guided Mirena insertion

Saline Infusion Sonohysterography

Saline infusion sonohysterography is of benefit to women experiencing abnormal vaginal bleeding, infertility and recurrent miscarriage.

Using a speculum, a soft plastic tube is inserted into the uterus. Under ultrasound guidance saline is infused into the uterine cavity allowing improved visualisation of the cavity. This improves detection of endometrial polyps, submucous fibroids, adhesions, uterine septation and abnormal endometrial cavity shapes, all with minimal discomfort and without the need for an anaesthetic.

Hysterosalpingo-contrast-sonography (HyCoSy)

An extension of the saline infusion sonohysterography is visualisation of tubal patency using aerated saline. Occluded (blocked) fallopian tubes are a common cause of infertility. Tubal occlusion can occur with a number of conditions including previous pelvic infection,

severe endometriosis, previous appendicitis and pelvic adhesions. Many women will be unaware that these conditions are present and that tubal blockage has occurred. The HyCoSy procedure is also able to be performed without an anaesthetic and with minimal discomfort.

Ultrasonic Assessment for Deep-Infiltrating Endometriosis

Preoperative assessment for deep-infiltrating endometriosis may help some women avoid a diagnostic laparoscopy prior to referral to a laparoscopic specialist for treatment. It also aids in preoperative planning. Bowel preparation is required prior, to allow optimal assessment of the rectovaginal septum and rectal mucosa for endometriosis involvement.

Ultrasound Guided Mirena Insertion

Particularly useful for women with previous caesarean section, nulliparous and those with a retroverted uterus, ultrasound guidance allows optimal placement of the Mirena within the endometrial cavity and reduces the risk of perforation. 3D reconstruction imaging post insertion offers advanced confidence of correct Mirena placement within the cavity.

Using ultrasound guidance for Mirena insertion may also be better tolerated by women by reducing the need for instrumentation of the cervix.

Welcome...

DR ANNELIESE PERKINS.

Anneliese joins our team as the Sonologist reporting both Monday and Wednesday. Anneliese is a specialist Obstetrician & Gynaecologist having worked in maternal fetal medicine and ultrasound at the Women's and Children's Hospital.

Anneliese compliments the existing team of Dr Jay McGavigan and Dr Peter Muller and has allowed us to now offer a 5 day service. Anneliese has a particular interest in gynae ultrasound and has recently returned from Sydney after training with Ultrasound Care, a leading provider of obstetric and gynae ultrasound services.

As of 29th February 2016, we will be able to offer HyCoSy, Sonohysterograms and Ultrasound Guided Mirena insertion as a part of our service (see New Gynaecology Ultrasound Services).



SERVICES AVAILABLE

- Obstetric Ultrasound 1st, 2nd & 3rd Trimester
- 3D and 4D morphology evaluation.
- Nuchal Translucency Scanning & Patient Counselling
- Fetal surveillance for the complicated singleton and multiple pregnancy
- CVS
- Amniocentesis
- O&G related Interventional Services
- Gynaecological Imaging
 - Sonohysterography
 - HyCoSy
 - Ultrasound Guided Mirena Insertion

ADELAIDE
Women's
 iMAGING

Tennyson Centre
 520 South Road,
 Kurrallta Park SA 5037

For Bookings please call:

P 08 8193 9522 F 08 8193 9518

E awi@adelaidewomensimaging.com.au

www.adelaidewomensimaging.com.au

